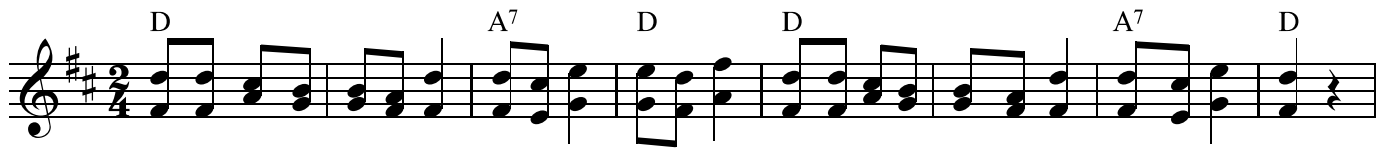
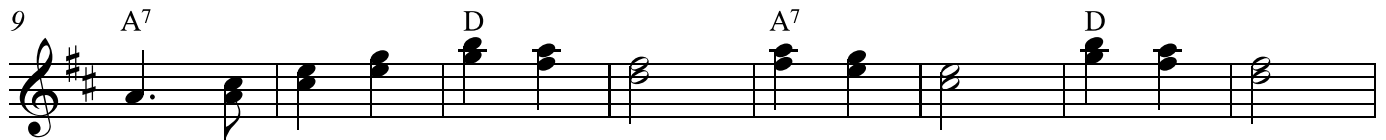


Šly panenky silnici

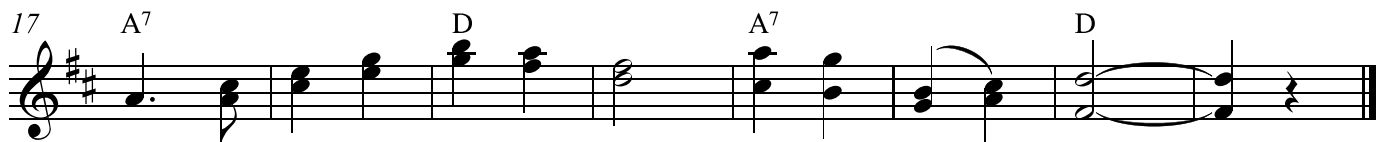
www.franzdorfer.com



Šly pa-nen-ky sil-ni-cí, sil-ni-cí, sil-ni-cí, pot-ka-li je mys-liv-ci, mys-liv-ci dva:



Kam pa - nen - ky, kam jde - te, kam jde - te, kam jde - te?



Kte - rá mo - je bud - e - te, bud - e - te má? _____